



**Water Monitoring Result at M5B - Central Cooling Water Intake Group
Mid-Flood Tide**

Date	Time	Weather Condition	Sampling Depth		Water Temperature			pH			Salinity			DO Saturation		DO		Turbidity		Suspended Solids				
					°C		-		ppt		%		mg/L		NTU		mg/L							
			m	Value	Average	Value	Average	Value	Average	Value	Average	Value	Average	Value	Average	Value	Average	Value	Average					
1/4/15	17:10	Fine	Middle	3.5	22.70	22.70	22.80	8.12	8.12	8.14	32.45	32.45	32.39	76.2	75.4	75.0	5.45	5.38	5.35	4.35	4.30	4.26	4	4.00
	17:12		Middle	3.5	22.90	22.90		8.15	8.15		32.33	32.33		75.3	72.9		5.37	5.20		4.20	4.20		4	
3/4/15	18:16	Cloudy	Middle	3.5	23.40	23.40	23.45	8.00	8.00	8.00	32.05	32.05	32.21	76.4	76.8	76.8	5.39	5.42	5.42	5.95	5.90	5.85	6	6.50
	18:17		Middle	3.5	23.50	23.50		8.00	8.00		32.37	32.37		77.3	76.5		5.46	5.40		5.80	5.73		7	
7/4/15	9:40	Cloudy	Middle	3.5	23.80	23.80	23.85	7.92	7.92	7.92	32.29	32.29	32.31	79.4	78.7	78.5	5.57	5.51	5.50	5.45	5.72	5.54	6	6.00
	9:41		Middle	3.5	23.90	23.90		7.92	7.92		32.33	32.33		78.1	77.8		5.47	5.45		5.48	5.51		6	
9/4/15	9:12	Cloudy	Middle	3.5	20.80	20.80	20.70	8.23	8.23	8.24	32.72	32.72	32.73	75.1	75.4	75.9	5.55	5.58	5.61	5.89	5.89	5.90	7	7.50
	9:14		Middle	3.5	20.60	20.60		8.24	8.24		32.74	32.74		76.7	76.2		5.67	5.64		5.90	5.90		8	
11/4/15	9:56	Cloudy	Middle	3.5	20.50	20.50	20.48	8.18	8.18	8.19	32.29	32.29	32.33	64.3	63.0	62.5	4.79	4.69	4.66	3.51	3.51	3.50	2	2.00
	9:58		Middle	3.5	20.40	20.50		8.19	8.19		32.36	32.36		61.7	61.1		4.60	4.55		3.50	3.49		2	
13/4/15	10:40	Fine	Middle	3.0	22.10	22.10	22.15	8.21	8.21	8.21	32.92	32.92	32.92	77.7	78.1	77.7	5.51	5.55	5.51	2.99	2.89	2.92	3	3.00
	10:42		Middle	3.0	22.20	22.20		8.21	8.21		32.92	32.92		78.0	77.1		5.52	5.45		2.87	2.91		3	
15/4/15	14:06	Fine	Middle	3.5	22.60	22.60	22.60	8.18	8.18	8.18	33.04	33.04	33.04	71.5	70.4	70.1	5.11	5.02	5.00	5.34	3.75	5.03	9	9.00
	14:08		Middle	3.5	22.60	22.60		8.18	8.18		33.03	33.03		70.0	68.6		4.99	4.89		5.63	5.40		9	
17/4/15	16:15	Fine	Middle	3.5	24.00	24.00	23.90	8.17	8.17	8.20	32.29	32.29	32.39	68.5	68.9	68.9	4.82	4.84	4.84	2.93	2.86	2.88	7	6.00
	16:17		Middle	3.5	23.80	23.80		8.22	8.22		32.48	32.48		68.9	69.1		4.84	4.85		2.86	2.85		5	
20/4/15	19:20	Cloudy	Middle	3.0	24.30	24.30	24.30	8.02	8.02	8.03	31.16	31.16	31.17	83.8	86.5	85.3	5.86	6.05	5.97	4.90	4.98	4.88	4	4.00
	19:21		Middle	3.0	24.30	24.30		8.04	8.04		31.17	31.17		85.8	85.0		6.00	5.97		4.79	4.83		4	
22/4/15	10:25	Cloudy	Middle	3.0	23.10	23.10	23.15	7.96	7.96	7.97	32.90	32.90	32.89	74.0	70.8	70.2	5.24	5.00	4.96	2.75	2.73	2.74	6	5.50
	10:27		Middle	3.0	23.20	23.20		7.97	7.97		32.87	32.87		68.9	67.0		4.87	4.71		2.74	2.75		5	
24/4/15	9:16	Fine	Middle	3.5	23.00	23.00	23.05	7.93	7.93	7.94	32.59	32.59	32.59	78.0	75.9	75.0	5.53	5.39	5.32	2.53	2.57	2.57	5	4.50
	9:18		Middle	3.5	23.10	23.10		7.94	7.94		32.59	32.59		74.1	71.8		5.26	5.09		2.58	2.60		4	
28/4/15	1:25	Fine	Middle	3.0	24.50	24.50	24.50	8.17	8.17	8.17	31.83	31.83	31.83	83.9	85.0	84.8	5.84	5.91	5.89	3.51	3.53	3.63	6	5.50
	1:26		Middle	3.0	24.50	24.50		8.17	8.17		31.83	31.83		84.1	86.1		5.82	5.98		3.82	3.65		5	
30/4/15	15:57	Fine	Middle	3.0	26.90	26.90	26.60	8.22	8.22	8.23	31.72	31.72	31.79	89.5	88.8	88.0	6.04	5.99	5.94	2.51	2.49	2.48	3	3.00
	15:59		Middle	3.0	26.30	26.30		8.24	8.24		31.85	31.85		87.4	86.2		5.90	5.82		2.48	2.44		3	

Remarks:
Single underline denotes exceedance over Action Level.
Double underline denotes exceedance over Limit Level.



**Water Monitoring Result at Culvert J - Reference Station
Mid-Flood Tide**

Date	Time	Weather Condition	Sampling Depth		Water Temperature			pH			Salinity			DO Saturation			DO			Turbidity			Suspended Solids	
					°C		-		ppt		%		mg/L		NTU		mg/L							
			m	Value	Average	Value	Average	Value	Average	Value	Average	Value	Average	Value	Average	Value	Average	Value	Average	Value	Average	Value	Average	
1/4/15	17:14	Fine	Middle	3.5	22.40	22.40	22.45	8.15	8.15	8.15	31.75	31.75	31.73	66.0	64.6	64.2	4.76	4.66	4.63	5.73	5.81	5.78	7	6.50
	17:16		Middle	3.5	22.50	22.50		8.14	8.14		31.70	31.70		63.8	62.2		4.60	4.49		5.81	5.78		6	
3/4/15	18:25	Cloudy	Middle	3.0	23.40	23.40	23.45	8.04	8.04	8.03	29.45	29.45	29.45	64.7	65.3	65.1	4.65	4.69	4.68	10.11	10.51	10.38	6	5.00
	18:26		Middle	3.0	23.50	23.50		8.02	8.02		29.44	29.44		65.1	65.2		4.68	4.69		10.56	10.33		4	
7/4/15	9:47	Cloudy	Middle	3.0	23.70	23.70	23.70	7.96	7.96	7.96	28.87	28.87	28.87	53.6	52.7	53.0	3.84	3.78	3.80	8.31	7.96	7.92	5	5.00
	9:48		Middle	3.0	23.70	23.70		7.96	7.96		28.87	28.87		53.1	52.6		3.81	3.78		7.62	7.77		5	
9/4/15	9:05	Cloudy	Middle	3.0	20.40	20.40	20.35	8.22	8.22	8.22	32.38	32.38	32.38	70.8	70.7	70.5	5.28	5.28	5.26	4.55	4.44	4.45	7	6.50
	9:07		Middle	3.0	20.30	20.30		8.22	8.22		32.38	32.38		70.5	70.0		5.26	5.23		4.41	4.40		6	
11/4/15	10:00	Cloudy	Middle	3.5	20.50	20.50	20.50	8.18	8.18	8.18	29.60	29.60	29.60	55.0	55.0	54.5	4.15	4.15	4.12	6.54	6.46	6.48	6	5.00
	10:02		Middle	3.5	20.50	20.50		8.17	8.17		29.60	29.60		54.2	53.6		4.10	4.06		6.46	6.45		4	
13/4/15	10:35	Fine	Middle	2.5	22.20	22.20	22.25	8.20	8.20	8.21	32.84	32.84	32.84	71.9	72.7	72.3	5.17	5.22	5.19	3.02	3.01	3.01	2	2.00
	10:37		Middle	2.5	22.30	22.30		8.21	8.21		32.84	32.84		72.3	72.1		5.19	5.18		3.00	3.00		2	
15/4/15	14:03	Fine	Middle	3.5	23.20	23.20	23.20	8.15	8.15	8.15	32.90	32.90	32.91	58.5	58.5	58.2	4.14	4.14	4.12	5.92	5.89	5.92	9	9.50
	14:05		Middle	3.5	23.20	23.20		8.15	8.15		32.92	32.92		58.4	57.3		4.13	4.05		5.94	5.91		10	
17/4/15	16:12	Fine	Middle	3.5	24.10	24.10	24.25	8.16	8.16	8.15	30.95	30.95	30.94	58.6	57.8	58.5	4.12	4.05	4.10	8.13	8.04	8.11	9	8.00
	16:14		Middle	3.5	24.40	24.40		8.14	8.14		30.95	30.92		58.9	58.6		4.13	4.11		8.07	8.21		7	
20/4/15	20:10	Cloudy	Middle	3.5	24.30	24.30	24.35	8.15	8.15	8.15	27.85	27.85	27.85	73.8	76.3	74.6	5.26	5.43	5.32	8.90	8.93	8.95	9	8.50
	20:11		Middle	3.5	24.40	24.40		8.15	8.15		27.85	27.85		75.0	73.2		5.34	5.24		8.87	9.08		8	
22/4/15	10:19	Cloudy	Middle	3.0	23.40	23.40	23.50	7.95	7.95	7.93	32.72	32.72	32.69	64.5	60.7	61.2	4.55	4.29	4.33	2.78	2.72	2.74	6	6.00
	10:21		Middle	3.0	23.60	23.60		7.91	7.91		32.66	32.66		59.8	59.6		4.21	4.25		2.72	2.72		6	
24/4/15	9:13	Fine	Middle	3.5	23.20	23.20	23.30	7.87	7.87	7.89	32.50	32.60	32.58	70.6	70.1	70.0	4.98	4.96	4.94	1.85	1.85	1.85	3	3.00
	9:15		Middle	3.5	23.40	23.40		7.91	7.91		32.61	32.61		69.9	69.3		4.93	4.90		1.85	1.83		3	
28/4/15	1:32	Fine	Middle	2.5	24.40	24.40	24.40	8.07	8.07	8.05	27.84	27.84	27.84	55.9	57.5	56.6	3.98	4.09	4.04	12.84	13.16	12.60	12	12.50
	1:33		Middle	2.5	24.40	24.40		8.02	8.02		27.83	27.83		56.9	56.2		4.05	4.03		11.68	12.70		13	
30/4/15	15:50	Fine	Middle	2.5	26.40	26.40	26.65	8.18	8.18	8.19	31.59	31.59	31.59	90.0	89.7	90.7	6.04	6.01	6.08	2.87	2.87	2.85	3	2.50
	15:52		Middle	2.5	26.90	26.90		8.20	8.20		31.59	31.59		91.4	91.5		6.13	6.14		2.87	2.80		2	



**Water Monitoring Result at M5B - Central Colling Water Intake Group
Mid-Ebb Tide**

Date	Time	Weather Condition	Sampling Depth		Water Temperature			pH			Salinity			DO Saturation		DO		Turbidity		Suspended Solids				
					°C			-			ppt			%		mg/L		NTU		mg/L				
					Value	Average		Value	Average		Value	Average		Value	Average		Value	Average	Value	Average	Value	Average	Value	Average
1/4/15	11:10	Fine	Middle	3.0	22.20	22.20	22.30	8.10	8.10	8.10	32.44	32.44	32.44	71.9	71.9	72.2	5.18	5.18	5.20	2.52	2.60	2.59	<2	<2
	11:12		Middle	3.0	22.40	22.40		8.10	8.10	8.10	32.43	32.43		32.44	72.6		72.3	72.2		5.23	5.20		5.20	
3/4/15	12:07	Sunny	Middle	3.5	24.80	24.80	24.80	7.83	7.83	7.83	32.61	32.61	32.61	80.7	80.9	80.8	5.56	5.57	5.56	5.02	5.07	5.12	5	5.00
	12:08		Middle	3.5	24.80	24.80		7.82	7.82	7.83	32.60	32.60		32.61	81.0		80.4	80.8		5.58	5.54		5.56	
7/4/15	14:55	Cloudy	Middle	3.0	25.60	25.60	25.57	8.04	8.04	8.05	32.35	32.35	32.57	72.7	75.3	73.1	5.02	5.24	5.08	4.19	4.22	4.22	4	4.00
	14:56		Middle	3.0	25.50	25.5		8.05	8.05	8.05	32.78	32.78		32.57	72.8		71.7	73.1		5.06	4.98		5.08	
9/4/15	15:56	Cloudy	Middle	3.0	20.80	20.80	20.80	8.23	8.23	8.23	32.77	32.77	32.77	76.7	75.1	75.1	5.59	5.53	5.52	4.37	4.36	4.40	4	5.00
	15:58		Middle	3.0	20.80	20.80		8.23	8.23	8.23	32.77	32.77		32.77	74.3		74.2	75.1		5.49	5.48		5.52	
11/4/15	16:00	Rainy	Middle	3.0	20.30	20.30	20.40	8.21	8.21	8.23	32.52	32.52	32.53	68.3	66.3	65.8	5.07	4.93	4.88	2.68	2.65	2.64	4	3.50
	16:02		Middle	3.0	20.50	20.50		8.24	8.24	8.23	32.54	32.54		32.53	64.8		63.6	65.8		4.81	4.72		4.88	
13/4/15	21:22	Fine	Middle	3.0	21.80	21.80	21.80	8.03	8.03	8.03	29.93	29.93	30.07	77.7	78.0	77.5	5.63	5.98	5.73	9.84	9.76	9.84	4	4.00
	21:23		Middle	3.0	21.80	21.80		8.03	8.03	8.03	30.21	30.21		30.07	77.3		77.1	77.5		5.64	5.68		5.73	
15/4/15	10:00	Fine	Middle	3.5	22.50	22.50	22.50	8.18	8.18	8.19	33.01	33.01	33.02	68.8	67.2	67.6	4.91	4.81	4.83	2.57	2.57	2.57	6	5.50
	10:02		Middle	3.5	22.50	22.50		8.19	8.19	8.19	33.02	33.02		33.02	67.4		67.0	67.6		4.82	4.79		4.83	
17/4/15	11:09	Fine	Middle	3.0	23.50	23.60	23.63	8.17	8.17	8.17	32.96	32.96	32.92	67.0	67.5	67.4	4.70	4.73	4.73	3.22	3.22	3.23	4	3.50
	11:11		Middle	3.0	23.70	23.70		8.17	8.17	8.17	32.87	32.87		32.92	67.2		67.8	67.4		4.72	4.76		4.73	
20/4/15	11:50	Cloudy	Middle	3.0	24.20	24.20	24.40	8.16	8.16	8.17	31.63	31.63	31.66	65.1	69.9	68.8	4.54	4.87	4.79	1.41	1.42	1.42	5	4.50
	11:52		Middle	3.0	24.60	24.60		8.17	8.17	8.17	31.69	31.69		31.66	70.0		70.0	68.8		4.88	4.87		4.79	
22/4/15	14:14	Sunny	Middle	3.5	24.00	24.00	24.00	7.93	7.93	7.94	32.59	32.59	32.43	70.4	69.5	68.8	4.92	4.84	4.80	1.85	1.82	1.82	4	3.50
	14:16		Middle	3.5	24.00	24.00		7.94	7.94	7.94	32.27	32.27		32.43	68.4		66.7	68.8		4.77	4.66		4.80	
24/4/15	15:30	Fine	Middle	3.5	24.60	24.60	24.70	7.95	7.95	7.96	32.88	32.88	32.80	79.1	82.0	81.5	5.46	5.64	5.61	1.89	1.90	2.02	5	4.50
	15:32		Middle	3.5	24.80	24.80		7.96	7.96	7.96	32.72	32.72		32.80	82.5		82.5	81.5		5.68	5.67		5.61	
27/4/15	20:28	Fine	Middle	3.0	24.90	24.90	24.90	8.09	8.09	8.09	31.90	31.90	31.90	81.6	80.9	82.7	5.63	5.57	5.70	5.61	5.39	5.35	7	6.00
	20:29		Middle	3.0	24.90	24.90		8.10	8.09	8.09	31.90	31.90		31.90	85.3		82.8	82.7		5.88	5.71		5.70	
30/4/15	12:15	Fine	Middle	3.0	26.60	26.60	26.75	8.19	8.19	8.19	31.76	31.76	31.80	93.0	93.5	93.2	6.43	6.47	6.44	2.13	2.27	2.29	2	2.50
	12:17		Middle	3.0	26.90	26.90		8.19	8.19	8.19	31.83	31.83		31.80	93.4		92.8	93.2		6.45	6.40		6.44	

Remarks:
Single underline denotes exceedance over Action Level.
Double underline denotes exceedance over Limit Level.

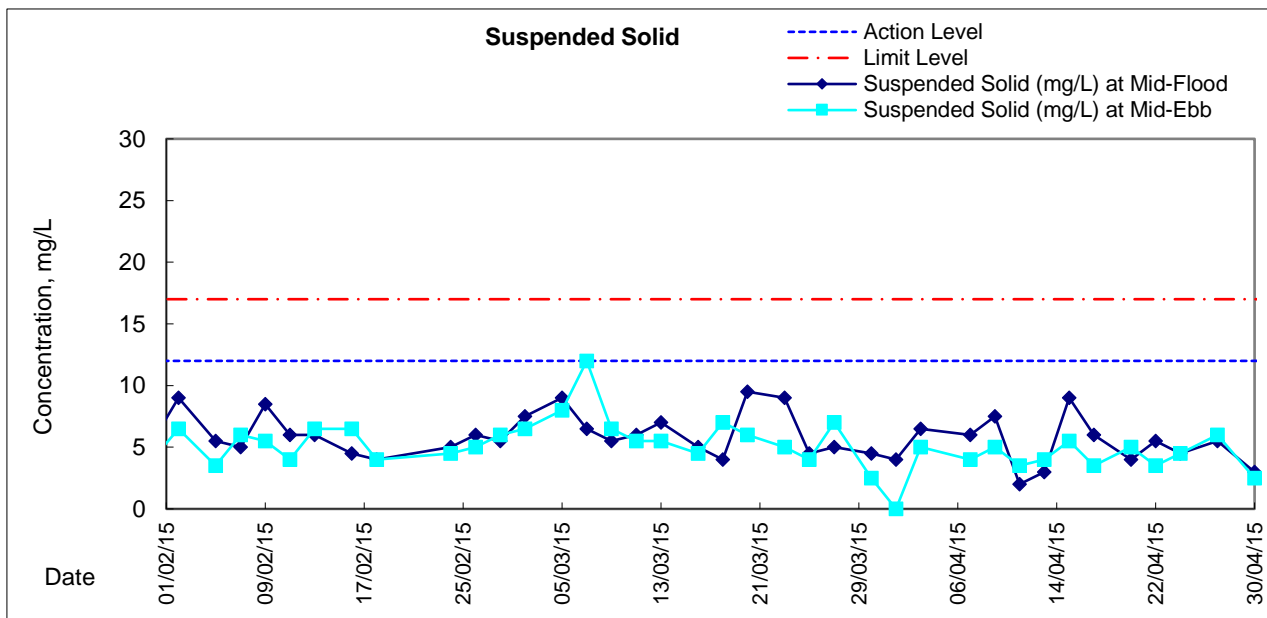
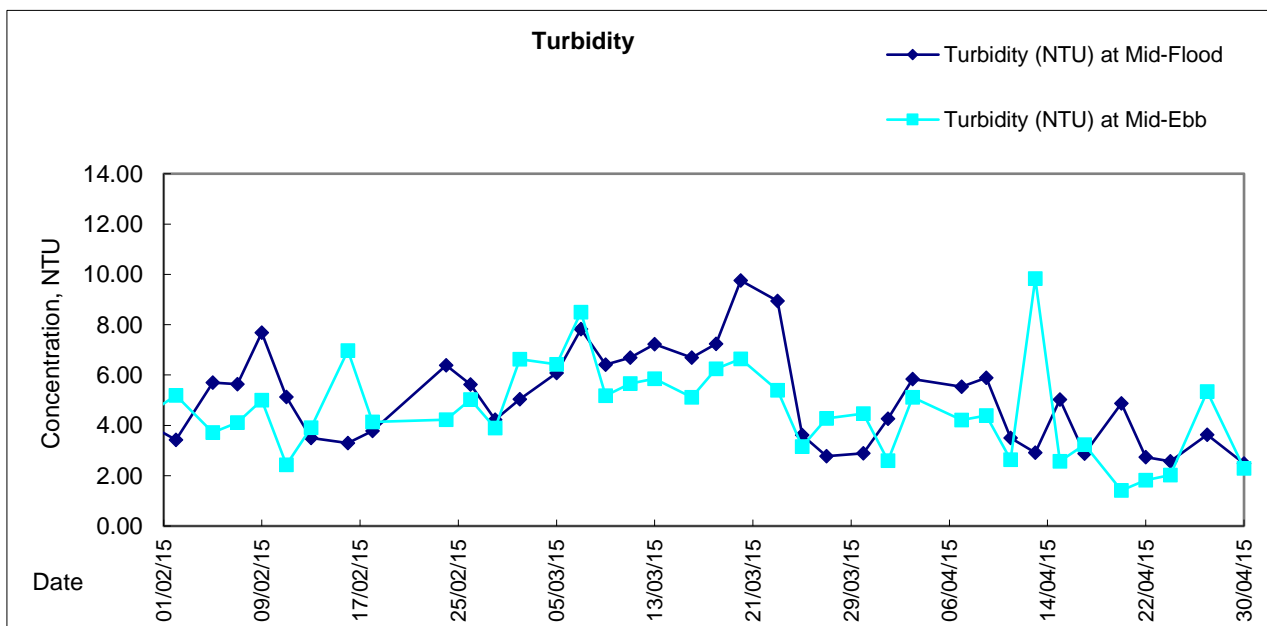
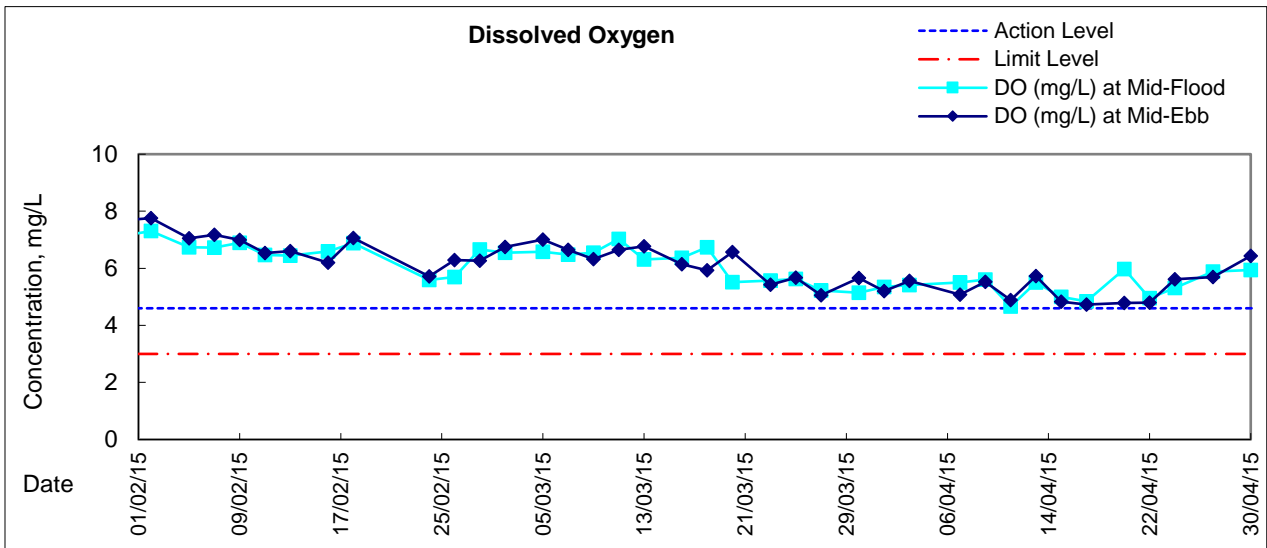


**Water Monitoring Result at Culvert J - Reference Station
Mid-Ebb Tide**

Date	Time	Weather Condition	Sampling Depth		Water Temperature			pH			Salinity		DO Saturation		DO		Turbidity		Suspended Solids					
					°C		-		ppt		%		mg/L		NTU		mg/L							
					Value	Average	Value	Average	Value	Average	Value	Average	Value	Average	Value	Average	Value	Average	Value	Average				
1/4/15	11:05	Fine	Middle	3	22.70	22.70	22.85	8.08	8.08	8.08	32.37	32.37	32.36	66.2	67.0	66.8	4.72	4.78	4.76	2.64	2.64	2.59	2	2.50
	11:07		Middle	3	23.00	23.00		8.07	8.07		32.34	32.34		67.1	67.0		4.78	4.77		2.55	2.54		3	
3/4/15	12:16	Sunny	Middle	3	24.70	24.70	24.70	7.84	7.84	7.83	27.37	27.37	27.37	37.1	37.8	37.8	2.64	2.69	2.69	17.66	17.21	17.41	12	11.50
	12:17		Middle	3	24.70	24.70		7.82	7.82		27.36	27.36		38.2	38.1		2.72	2.71		17.28	17.49		11	
7/4/15	15:10	Cloudy	Middle	3	25.00	25.00	25.00	8.07	8.07	8.06	29.91	29.91	29.91	62.2	61.7	61.7	4.34	4.31	4.31	4.14	4.07	4.06	4	4.50
	15:11		Middle	3	25.00	25.00		8.04	8.04		29.91	29.91		61.3	61.5		4.28	4.29		4.02	4.00		5	
9/4/15	15:50	Cloudy	Middle	3	20.90	20.90	20.90	8.21	8.21	8.22	32.71	32.71	32.71	67.5	67.6	67.8	4.98	4.99	5.00	4.38	4.49	4.48	5	5.00
	15:52		Middle	3	20.90	20.90		8.22	8.22		32.71	32.71		68.1	68.0		5.01	5.01		4.51	4.53		5	
11/4/15	15:57	Rainy	Middle	3	20.20	20.20	20.20	8.25	8.25	8.25	32.57	32.57	32.57	62.7	61.4	60.8	4.68	4.59	4.54	3.03	3.02	3.02	3	3.00
	15:59		Middle	3	20.20	20.20		8.25	8.25		32.57	32.57		60.4	58.6		4.51	4.38		3.02	3.01		3	
13/4/15	21:27	Fine	Middle	3	22.10	22.10	22.10	8.05	8.05	8.05	26.50	26.50	26.50	38.0	38.4	38.5	3.01	3.02	3.11	8.91	8.81	8.79	17	17.00
	21:28		Middle	3	22.10	22.10		8.04	8.04		26.50	26.50		38.8	38.9		3.20	3.20		8.76	8.66		17	
15/4/15	10:03	Fine	Middle	4	22.20	22.20	22.20	8.18	8.18	8.18	32.69	32.69	32.71	61.9	61.9	61.2	4.46	4.46	4.41	2.84	2.82	2.82	4	4.50
	10:05		Middle	4	22.20	22.20		8.17	8.17		32.73	32.73		61.4	59.5		4.42	4.29		2.82	2.81		5	
17/4/15	11:06	Fine	Middle	3	23.50	23.70	23.60	8.14	8.14	8.15	27.49	27.57	27.56	50.0	49.7	49.3	3.62	3.60	3.57	9.18	9.37	9.34	6	6.50
	11:08		Middle	3	23.60	23.60		8.15	8.15		27.58	27.58		48.3	49.2		3.50	3.56		9.46	9.34		7	
20/4/15	11:45	Cloudy	Middle	3	24.60	24.60	24.80	8.04	8.04	8.04	28.18	28.18	28.18	53.7	53.9	53.4	3.79	3.81	3.77	7.63	7.61	7.64	10	10.00
	11:47		Middle	3	25.00	25.00		8.03	8.03		28.17	28.17		53.4	52.7		3.77	3.72		7.63	7.67		10	
22/4/15	14:11	Sunny	Middle	4	24.20	24.20	24.35	7.92	7.92	7.93	31.86	31.86	31.81	67.1	65.6	65.1	4.68	4.57	4.54	3.32	3.31	3.31	5	5.00
	14:13		Middle	4	24.50	24.50		7.93	7.93		31.76	31.76		64.6	63.1		4.50	4.39		3.30	3.30		5	
24/4/15	15:36	Fine	Middle	3	24.50	24.50	24.50	7.97	7.97	7.97	32.66	32.66	32.67	73.1	72.9	73.7	5.07	5.06	5.11	3.40	3.39	3.41	4	4.00
	15:37		Middle	3	24.50	24.50		7.97	7.97		32.67	32.67		73.3	75.5		5.08	5.23		3.45	3.40		4	
27/4/15	20:35	Fine	Middle	3	24.30	24.30	24.35	8.03	8.03	8.01	29.37	29.37	29.37	64.8	65.7	64.6	4.58	4.65	4.57	7.61	7.53	7.43	6	6.00
	20:36		Middle	3	24.40	24.40		7.97	8.00		29.36	29.36		64.1	63.6		4.53	4.50		7.42	7.17		6	
30/4/15	12:10	Fine	Middle	3	26.50	26.50	26.60	8.20	8.20	8.20	31.45	31.45	31.56	88.1	86.7	87.2	5.92	5.82	5.86	2.74	2.64	2.63	3	3.00
	12:12		Middle	3	26.70	26.70		8.20	8.20		31.66	31.66		87.1	87.0		5.85	5.84		2.57	2.55		3	



Graphic Presentation of Water Quality Result of M5B - Central Cooling Water Intake Groups





Graphic Presentation of Water Quality Result of Culvert J - Reference Station

